

RHODE ISLAND DEPARTMENT OF ENVIRONMENTAL MANAGEMENT

Protecting our environment, growing our green economy, and enhancing outdoor recreation



Our mission

To protect, restore, manage, and promote Rhode Island's environment and natural resources to preserve and improve our quality of life.

Our continued efforts and leadership at the State level are even more important now because of uncertainty at the Federal level about many programs that protect public health and the environment.



RI voters approve Beach, Clean Water and Green Bond with 78% support



- \$74 million bond will leverage tens of millions of additional dollars for projects
- Once-in-a-generation investment for capital projects at state parks, beaches, and campgrounds
- Funding for drinking and wastewater infrastructure and municipalities to best prepare for the effects of climate change
- Will spur environmental improvement, quality of life, and economic revitalization within the Woonasquatucket River watershed

COVID-19 response and lessons

Successful transition to teleworking while continuing operations



- RI one of a handful of states that continued regular field investigations/inspections in 2020
- Across DEM's major permitting programs, permit volume has increased 33% since FY15
- Comparing 2019 to 2020:
 - Open records requests held steady at close to 2,000 per year. DEM's Permit Application Center met all APRA deadlines in 2020.
 - Slight decrease in OC&I inspections and monitoring.
 - Slight increase in LUST investigations.
 - All OWTS permitting held steady. Records online!
 - Increases in permitting for RIPDES, Freshwater Wetlands, and Water Quality Certifications

COVID-19 response and lessons

Safe outdoor recreation

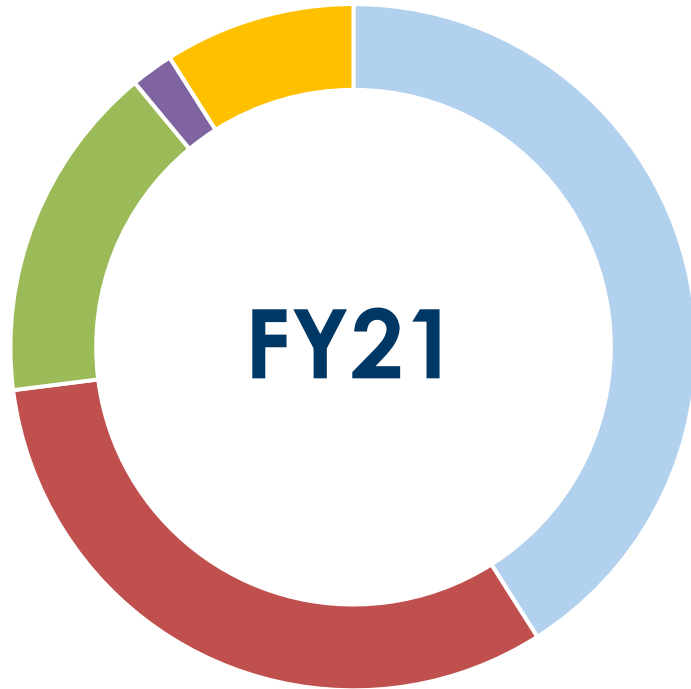
- 24% increase in beach attendance in 2020
- Expanded online services for beach parking pass sales and real-time status of parking lots
- Continued wildlife education through virtual programs and online trainings for educators
- Supported the commercial fishing industry through direct sales and increased transparency on weekly landings and administered the quick disbursement of fisheries relief funds
- Collected public input as part of study to assess the Divisions of Fish & Wildlife and Forest Environment's strategic priorities
- Oversaw rules and policies for sports



**WE WANT YOUR INPUT
TAKE OUR SURVEY**



budget



- general revenue
- federal funds
- restricted receipts
- other funds
- ricap

	FY 2021 Revised	FY 2022 Recommend
General Revenue	\$42.6M	\$46.6M
Federal Funds	\$34.9M	\$32.7M
Restricted Receipts	\$18.0M	\$17.1M
Other Funds	\$1.8M	\$1.8M
RI Capital Plan Fund	\$12.2M	\$6.4M
	\$109.7M	\$104.7M

FTE Authorization	394	401
Current Staffing Level	379	
VRI to date	17	

Guiding priorities

As we continue to grow, innovate, and improve as a department, we remain focused on:

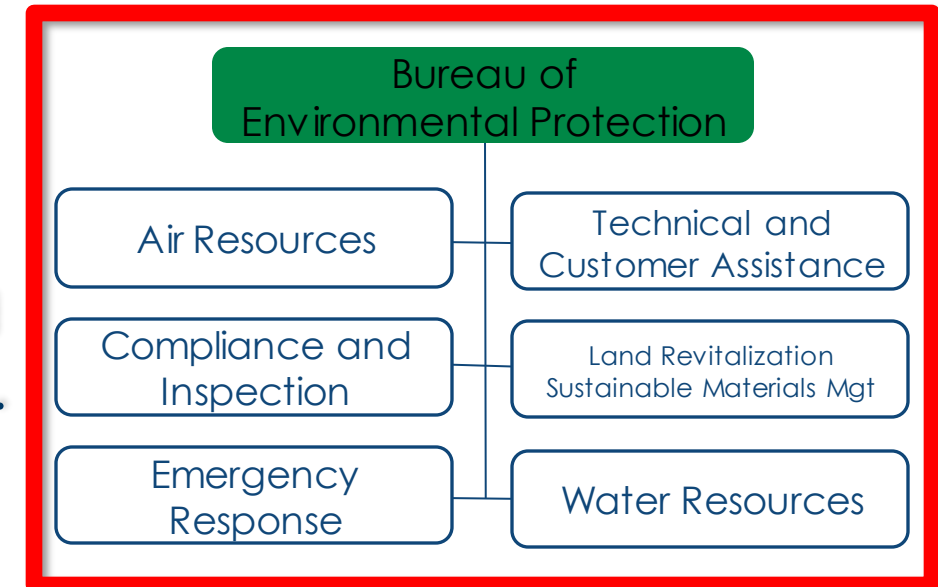


- Taking action to counter climate change and its effects, both locally and regionally
- Demonstrating statewide leadership in customer service, continuous improvement
- Promoting a healthy bay & communities
- Growing our state's vibrant green economy
- Connecting people with the outdoors

DEM Bureau of Environmental Protection

Responsible for preventing and minimizing pollution to, and monitoring the quality and overseeing the restoration of, water, air, and land.

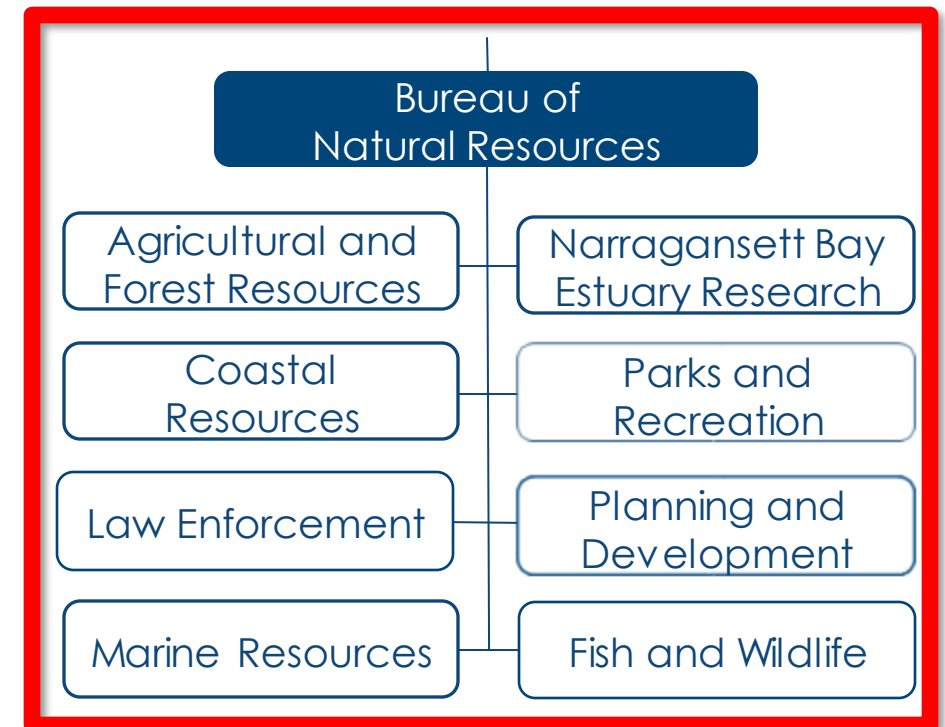
- The Offices of **Water Resources, Air Resources, and Land Revitalization and Sustainable Materials Management** evaluate applications, issue permits and oversee compliance.
- The Office of **Compliance and Inspection** investigates citizen complaints and is the centralized administrative office for enforcement.
- The Office of **Customer and Technical Assistance** coordinates the review of projects requiring multiple applications/permits and is the centralized administrative office for the receipt of applications.
- The Office of **Emergency Response** responds to spills of oil and chemicals.



DEM Bureau of Natural Resources

Protects, manages, and restores the state's wide array of historic parks, beaches, recreational facilities, and green spaces.

- Works to sustain, enhance Rhode Island's agricultural viability
- Manages State Park system
- Stewards fish, wildlife, and habitat resources
- Holds and oversees events
- Builds, manages assets
- Delivers programming
- Administers grants
- Develops and enforces regulations



Ensures RI will take bold action to reduce pollution, promote clean energy, and improve public health

Act on Climate Change

Historic climate change legislation that puts Rhode Island on a more ambitious schedule for reducing emissions of greenhouse gases.

- Tightens the economy-wide greenhouse gas (GHG) emission reduction targets.
- Tasks the Executive Climate Change Coordinating Council (EC4) with developing new greenhouse gas reduction plans.
- Provides EC4 member agencies with the authority to promulgate regulations needed to meet the GHG emission reduction targets.
- Includes an enforcement provision intended to ensure state government meets its obligations



DEM FY2021 Budget Overview

Article 7

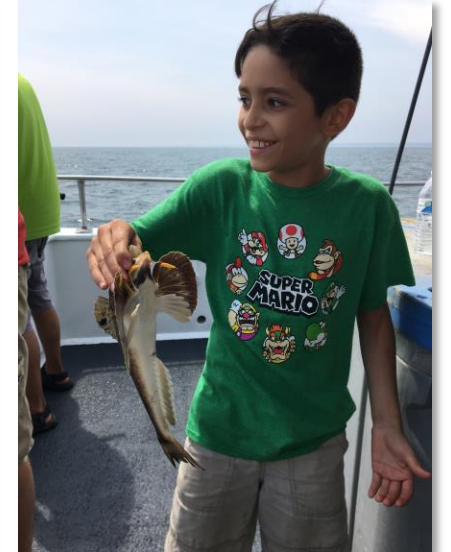
- **Fish and Wildlife License and Permit Fee Increases**
- **Agricultural Fee Increases**

Article 10

- **Commercial Fishing License Modernization**

Additional Priorities

- **Proposed Parking Fees for Misquamicut State Beach and Galilee Lot G**
- **Parks Initiative Phase II**
- **Investment in critical infrastructure at the Port of Galilee to support commercial fishing**



Investing in the modernization of Rhode Island State Parks

Parks Initiative

Governor McKee's FY2022 budget proposal adds \$621,000 to support

- 4 additional employees: maintenance technician, plumber, clerk and engineer
- Provides additional funding for operating expenses
- Also funded by an increase in daily parking rates at the state's busiest beach, Misquamicut State Beach. Unique location that welcomes mostly non-residents, with close to 88% of parking fees collected from out-of-state visitors in 2020



Progress made

Invest in staffing and operations

- Gradual increase of staffing, including 4 new FTEs in FY22 budget, and hiring additional seasonal positions
- Improved trash services at Misquamicut

Increase the financial stability and economic potential of state parks

- Expanded online services to include beach parking passes, Goddard golf, and lifeguard certification
- Adjusted camping, picnic fees to invest back into Division staffing/operations

Protect state park assets and infrastructure

- Bond funding, once-in-a-generation investment, to sustain and improve facilities



Bond funding for state beaches and parks benefits Rhode Islanders across the state

DEM plans to use bond funds to sustain and upgrade:

- Goddard Memorial Park's beach area
- Scarborough State Beach
- Brenton Point
- Campgrounds including Fishermen's Memorial and Burlingame
- Misquamicut State Beach
- Roger Wheeler State Beach

Totals a \$33M once-in-a-generation investment in our state beaches, campgrounds, and parks.



Parking fee increases at Misquamicut State Beach and the Port of Galilee

Misquamicut State Beach:

- Majority of visitors are non-residents. Close to 88% of visitors were from out-of-state in 2020
- Unique location that requires additional trash services to combat litter and marine debris
- Increases will support DEM's ability to support the unique needs of location and benefit municipality through host fees

Port of Galilee – Parking Lot G

- Proposed increases to seasonal placards and the daily parking rate for weekends/holidays



Investing in the Port of Galilee and Pier 9 in Newport

Coastal Resources

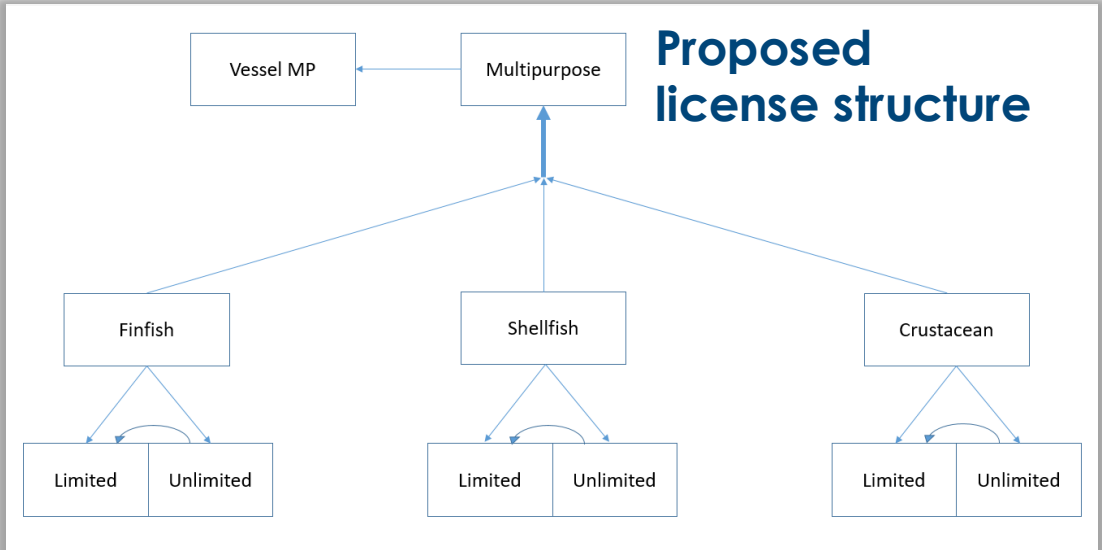
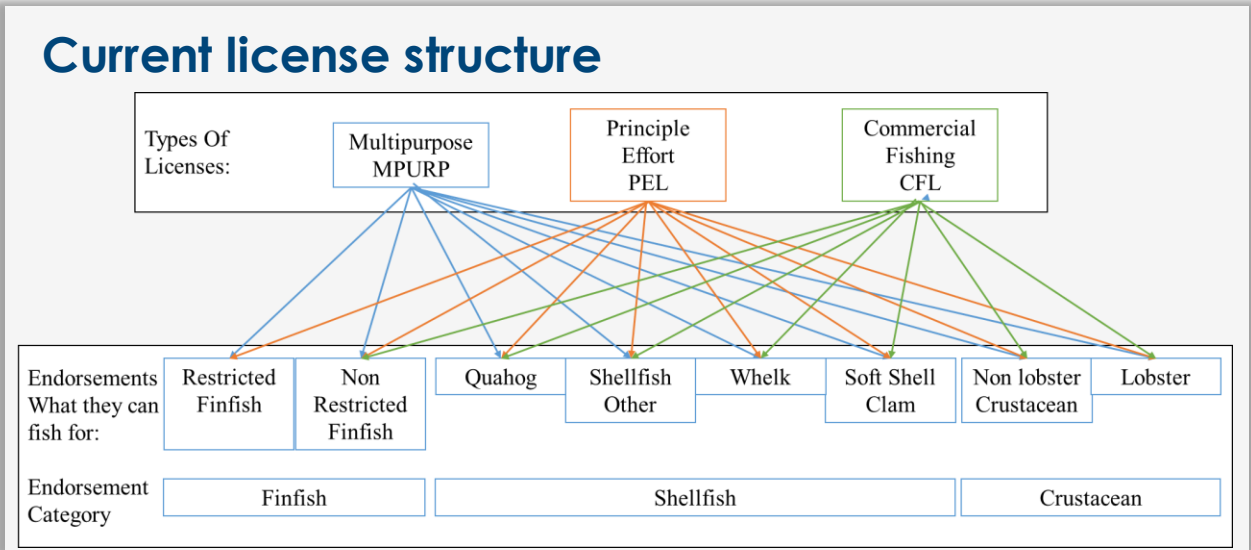
Proposal invests in DEM's Division of Coastal Resources, which operates the Ports, by adding \$534,000 to the budget.

- 3 additional employees: maintenance technician, chief implementation aide and assistant superintendent of state piers
- Provides additional funding for maintenance, repairs, and other operating expenditures.
- Rhode Island's seafood and fisheries industry supports 4,300 jobs and provides nearly \$420 million in economic impact



Streamlining and modernizing commercial fishing licenses will support the fishing industry

- RI's commercial fishing industry supports many **small businesses and thousands of jobs** and supplies delicious, fresh RI seafood to local and global markets
- This proposal **modernizes the license structure** and better aligns license costs with programmatic needs, as well as with fees in other states. Revenue will be allocated into a restricted account.
- Streamlining the licensing system will **create efficiencies for fishermen and fish processors, increase consistency and fairness**, improve data quality, support better management, and reduce administrative burden on DEM



Fish and Wildlife License and Permit fee increases will benefit the outdoor community

- Proposed increases to fees associated with many fish and wildlife licenses and permits will unlock Federal funds, improve conservation of fish and wildlife, and benefit the outdoor community
- The Fish and Wildlife Division supports a long tradition of fishing, hunting, and outdoor recreation.
 - Revenue raised is statutorily restricted to use for certain specific purposes by Division of Fish and Wildlife
 - Increased revenue is necessary to ensure that DEM has enough funds to **provide match for available federal funding**
- Fees would be increased in three steps between 2021 and 2028 and are intended to bring Rhode Island's fees **in line with our neighboring states**



THANK YOU!

